



DRAWING INDEX	
###	SHEET NAME
0-GENERAL	
G0.0	COVER SHEET
1-CIVIL	
C1.0	SITE LAYOUT AND UTILITY PLAN
C1.1	GRADING PLAN
C2.0	DETAILS I
C2.1	DETAILS II
2-LANDSCAPE	
L1.0	LANDSCAPE PLAN
L2.0	LANDSCAPE PLAN
L3.0	LANDSCAPE PLAN
L4.0	LANDSCAPE LIGHTING PLAN
3-ARCHITECTURAL	
A1.0	PARKING
A1.1	FIRST FLOOR PLAN
A1.2	SECOND FLOOR PLAN
A1.3	THIRD FLOOR PLAN
A1.4	FOURTH FLOOR PLAN
A1.5	FIFTH FLOOR PLAN
A1.6	SIXTH FLOOR PLAN
A1.7	ZONING CONSIDERATIONS
A2.1	EXTERIOR ELEVATIONS
A2.2	EXTERIOR ELEVATIONS
A7.1	PERSPECTIVES
A7.2	PERSPECTIVE RENDERINGS
A7.3	PERSPECTIVE RENDERINGS
A7.4	EXISTING SITE PHOTOS
A8.1	SOLAR STUDY

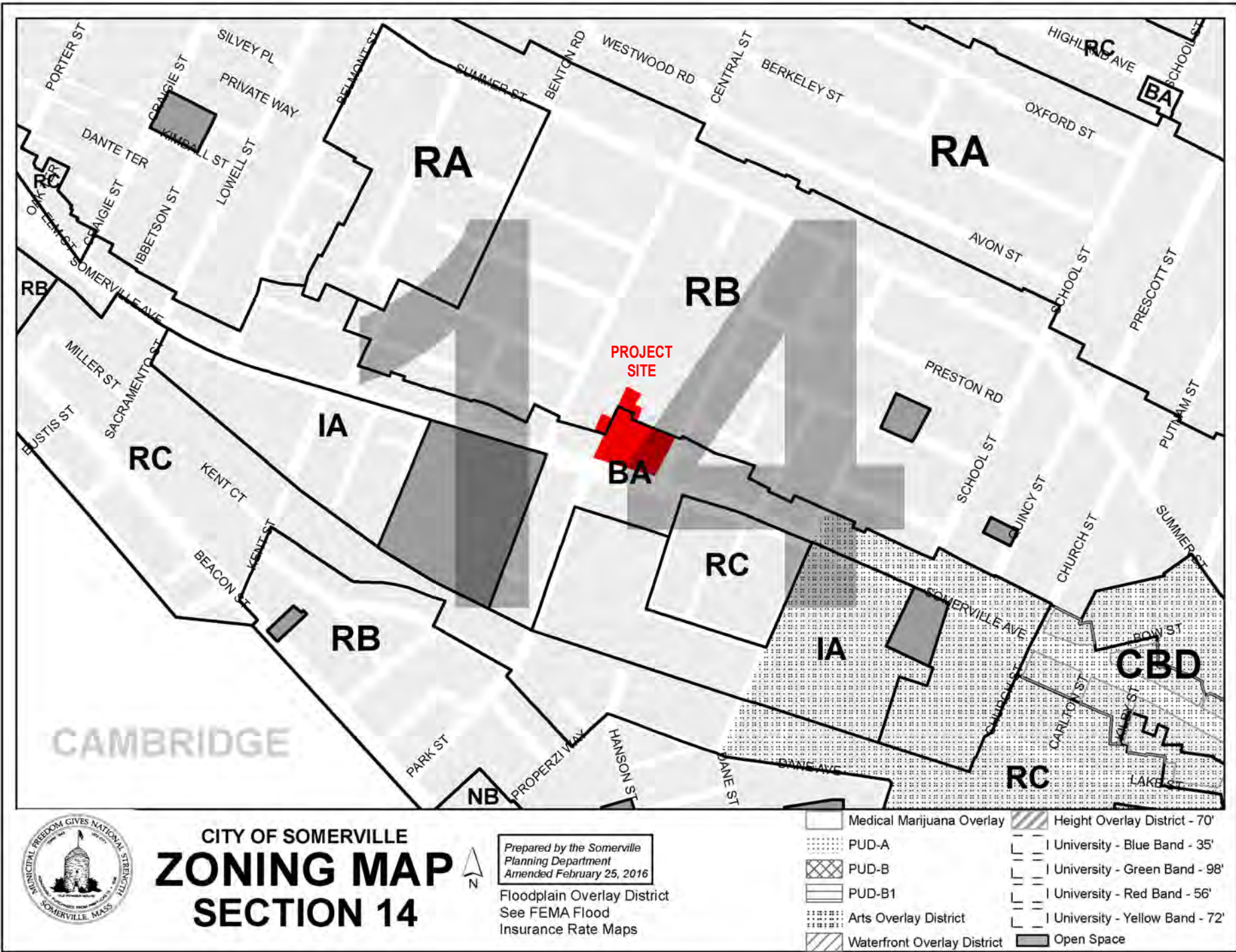


CambridgeSeven



Owner

The Noannet Group  
40 Trinity Place  
Boston, MA



PROPOSED: CAMBRIA HOTEL

515 Somerville Ave

UPDATED SUBMISSION

OCTOBER 4, 2018

- Architect
- CAMBRIDGE SEVEN ASSOCIATES, INC.  
Cambridge, MA
- Civil Engineer
- DCI  
Somerville, MA
- Structural Engineer
- ODEH ENGINEERS  
Providence, RI
- Landscape Consultant
- VERDANT LANDSCAPE ARCHITECTURE  
Brookline, MA
- Lighting Consultant
- APEX LIGHTING SOLUTIONS  
Boston, MA

GENERAL NOTES

ALL WORK PERFORMED AS PART OF THIS PROJECT SHALL CONFORM TO CITY OF SOMERVILLE, DEPT. OF PUBLIC WORKS AND ANY OTHER AGENCY WITH AUTHORITY IN THIS AREA.

CONTRACTOR TO MAINTAIN WORK AREA IN A CLEAN CONDITION. NO CONSTRUCTION DEBRIS SHALL BE ALLOWED TO ACCUMULATE WITHIN THE WORKSITE AND NO DIRT, GRAVEL, ETC. SHALL BE ALLOWED TO ACCUMULATE ON THE PUBLIC RIGHT-OF-WAY.

AREAS OUTSIDE THE LIMITS OF PROPOSED WORK DISTURBED BY THE CONTRACTOR'S OPERATIONS SHALL BE RESTORED BY THE CONTRACTOR TO THEIR ORIGINAL CONDITION AT THE CONTRACTOR'S EXPENSE.

SEE SHEET C2.0 FOR CONSTRUCTION NOTES.

PIPE MATERIALS:

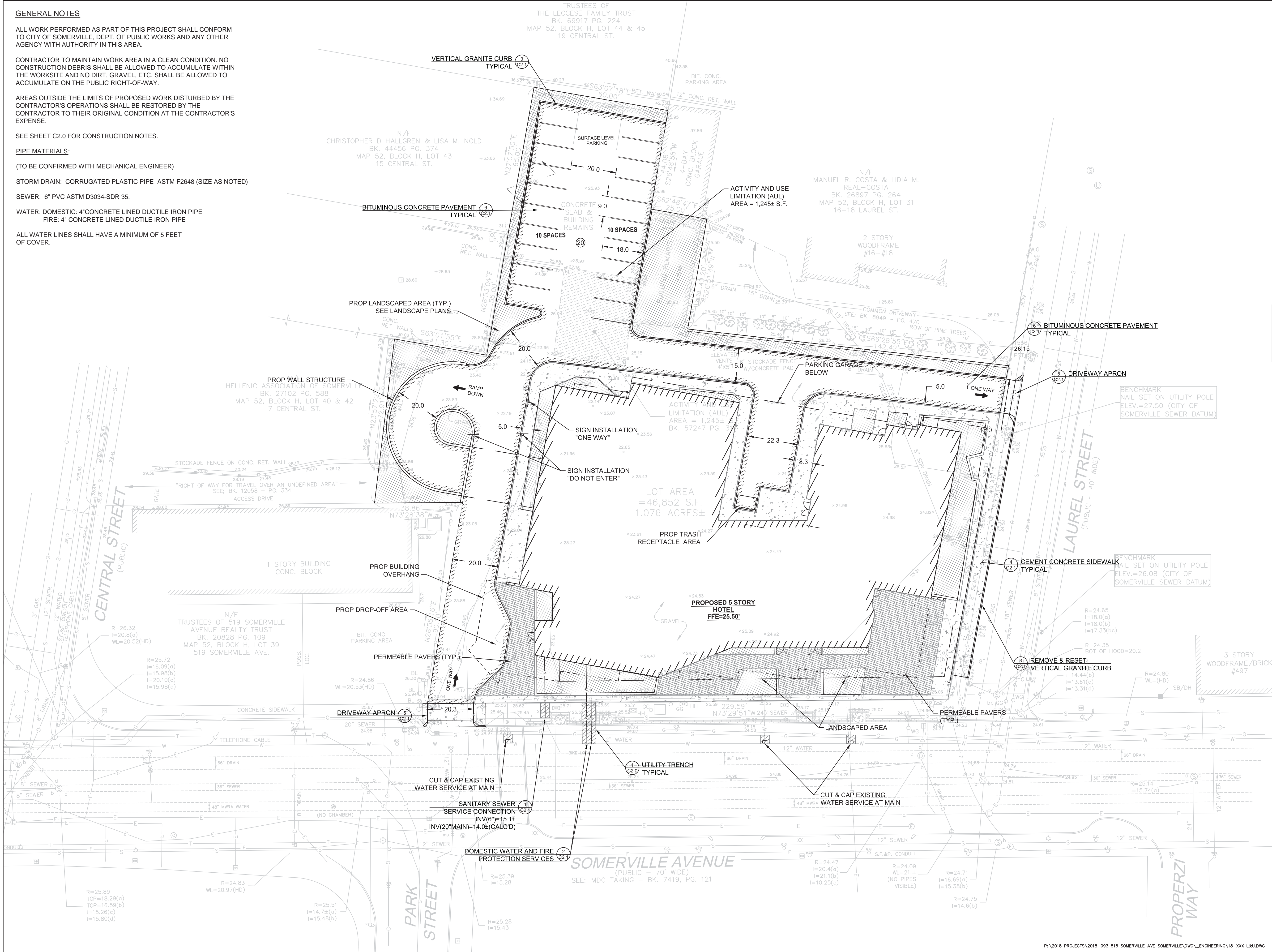
(TO BE CONFIRMED WITH MECHANICAL ENGINEER)

STORM DRAIN: CORRUGATED PLASTIC PIPE ASTM F2648 (SIZE AS NOTED)

SEWER: 6" PVC ASTM D3034-SDR 35.

WATER: DOMESTIC: 4" CONCRETE LINED DUCTILE IRON PIPE  
FIRE: 4" CONCRETE LINED DUCTILE IRON PIPE

ALL WATER LINES SHALL HAVE A MINIMUM OF 5 FEET OF COVER.



The Noannet Group  
**515 Somerville Ave**

**CambridgeSeven**

Architects and Planners

1050 Massachusetts Avenue  
Cambridge, MA 02138  
617 492-7000 Fax 492-7007

Consultant Name and Logo



1	NEW BUILDING FOOTPRINT	10/04/2018
Number	Revision	Date

Job #	2018-093		
Project	515 Somerville Ave		
Drawn By	ES/DM	Checked	ES
Date	08/28/2018		
Scale	1" = 20'		

Drawing Title  
**SITE LAYOUT & UTILITY PLAN**

**C1.0**

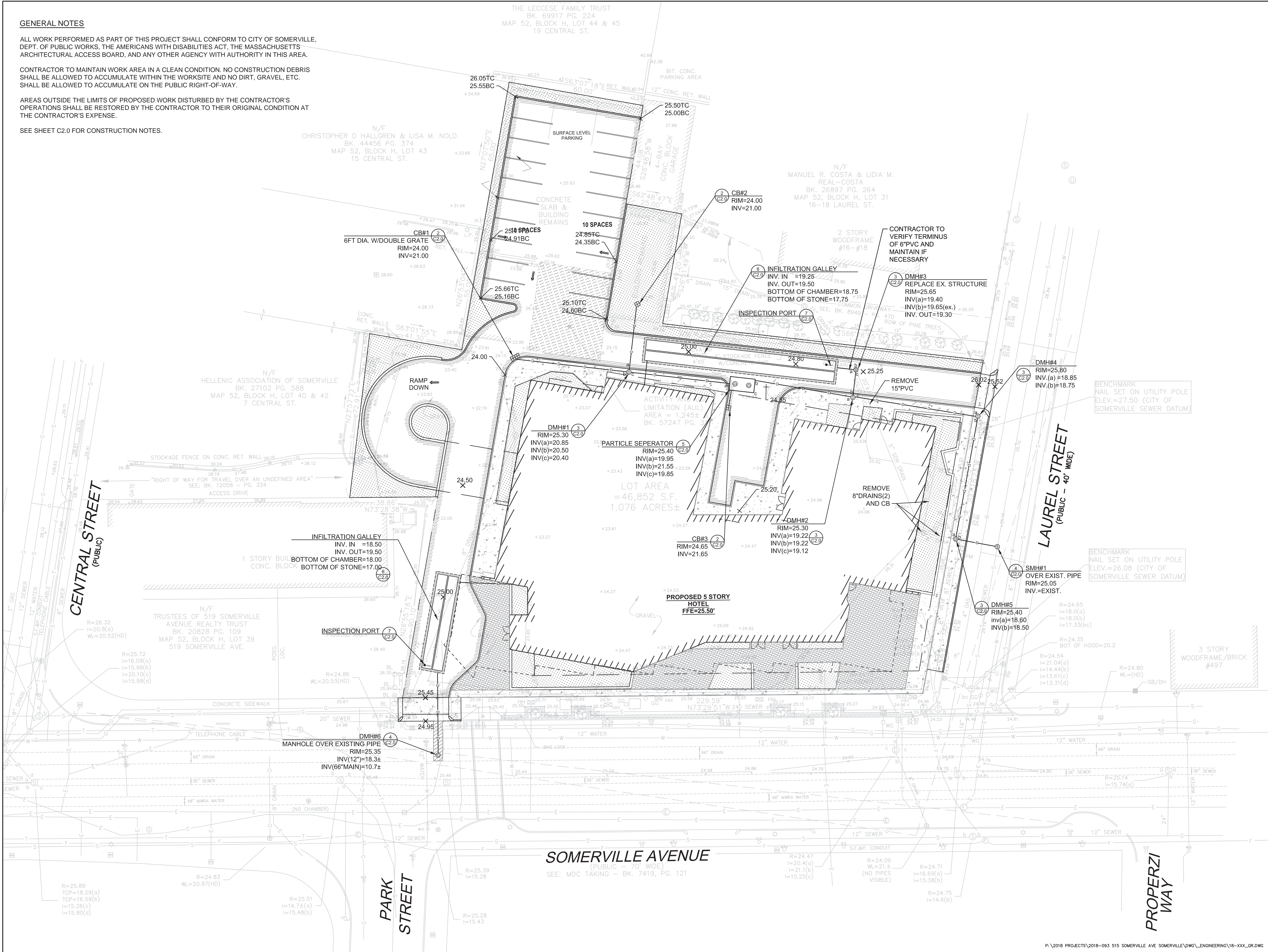
GENERAL NOTES

ALL WORK PERFORMED AS PART OF THIS PROJECT SHALL CONFORM TO CITY OF SOMERVILLE, DEPT. OF PUBLIC WORKS, THE AMERICANS WITH DISABILITIES ACT, THE MASSACHUSETTS ARCHITECTURAL ACCESS BOARD, AND ANY OTHER AGENCY WITH AUTHORITY IN THIS AREA.

CONTRACTOR TO MAINTAIN WORK AREA IN A CLEAN CONDITION. NO CONSTRUCTION DEBRIS SHALL BE ALLOWED TO ACCUMULATE WITHIN THE WORKSITE AND NO DIRT, GRAVEL, ETC. SHALL BE ALLOWED TO ACCUMULATE ON THE PUBLIC RIGHT-OF-WAY.

AREAS OUTSIDE THE LIMITS OF PROPOSED WORK DISTURBED BY THE CONTRACTOR'S OPERATIONS SHALL BE RESTORED BY THE CONTRACTOR TO THEIR ORIGINAL CONDITION AT THE CONTRACTOR'S EXPENSE.

SEE SHEET C2.0 FOR CONSTRUCTION NOTES.



The Noannet Group  
**515 Somerville Ave**

**CambridgeSeven**

Architects and Planners

1050 Massachusetts Avenue  
Cambridge, MA 02138  
617 492-7000 Fax 492-7007

Consultant Name and Logo



1	NEW BUILDING FOOTPRINT	10/04/2018
Number	Revision	Date

Job #	2018-093
Project	515 Somerville Ave
Drawn By	ES/DM
Checked	ES
Date	08/28/2018
Scale	1"=20'

**GRADING AND DRAINAGE PLAN**

**C1.1**



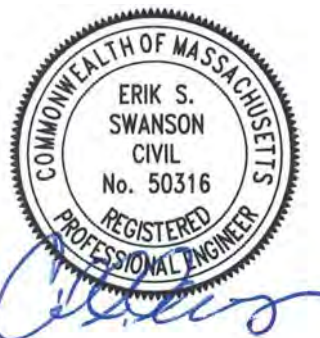
The Noannet Group  
**515 Somerville Ave**

**CambridgeSeven**

Architects and Planners

1050 Massachusetts Avenue  
Cambridge, MA 02138  
617 492-7000 Fax 492-7007

Consultant Name and Logo



1	NO REVISION THIS SHEET	10/04/2018
Number	Revision	Date

Job # 2018-093

Project 515 Somerville Ave

Drawn By ES/DM Checked ES

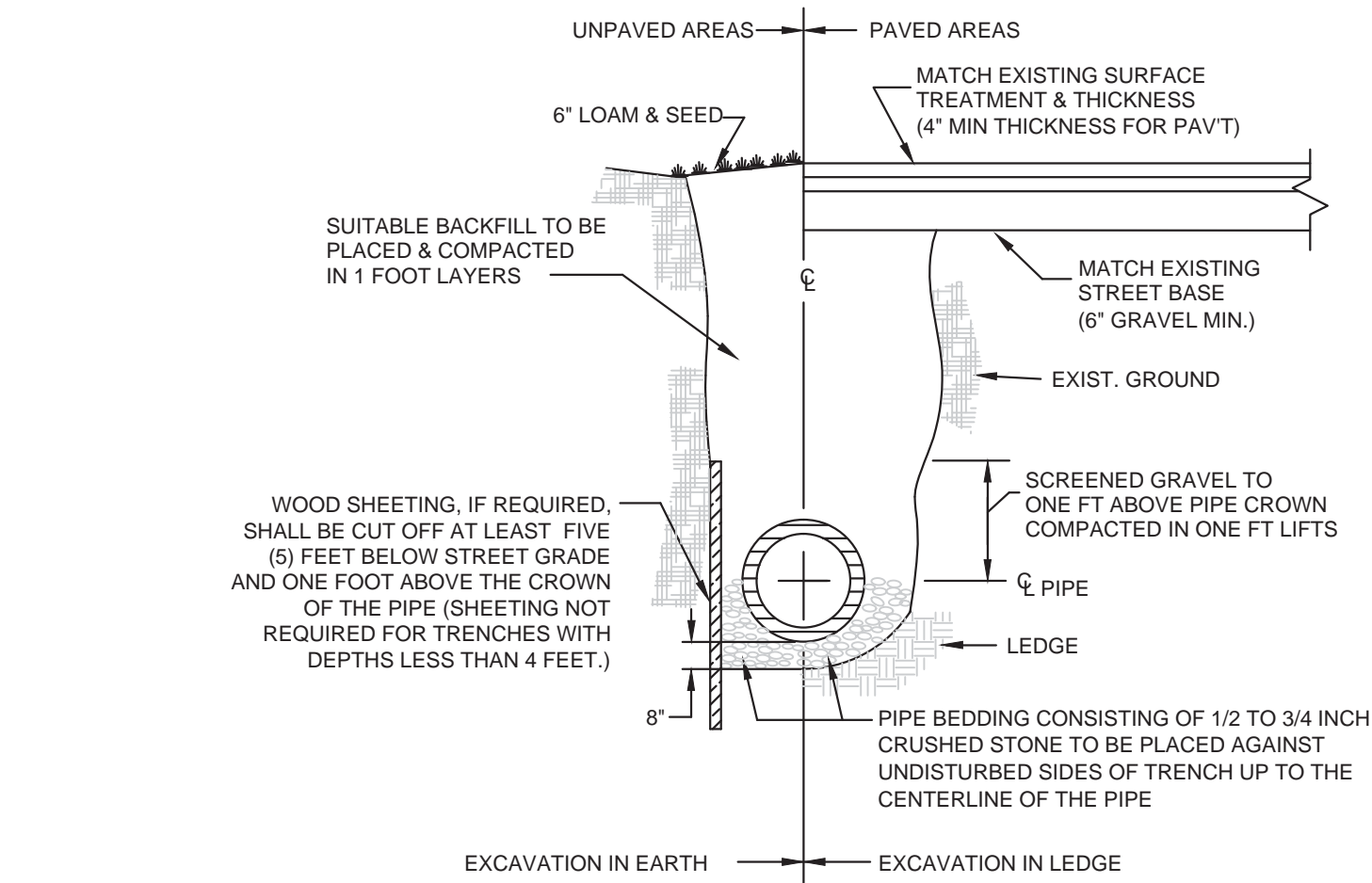
Date 08/28/2018

Scale NTS

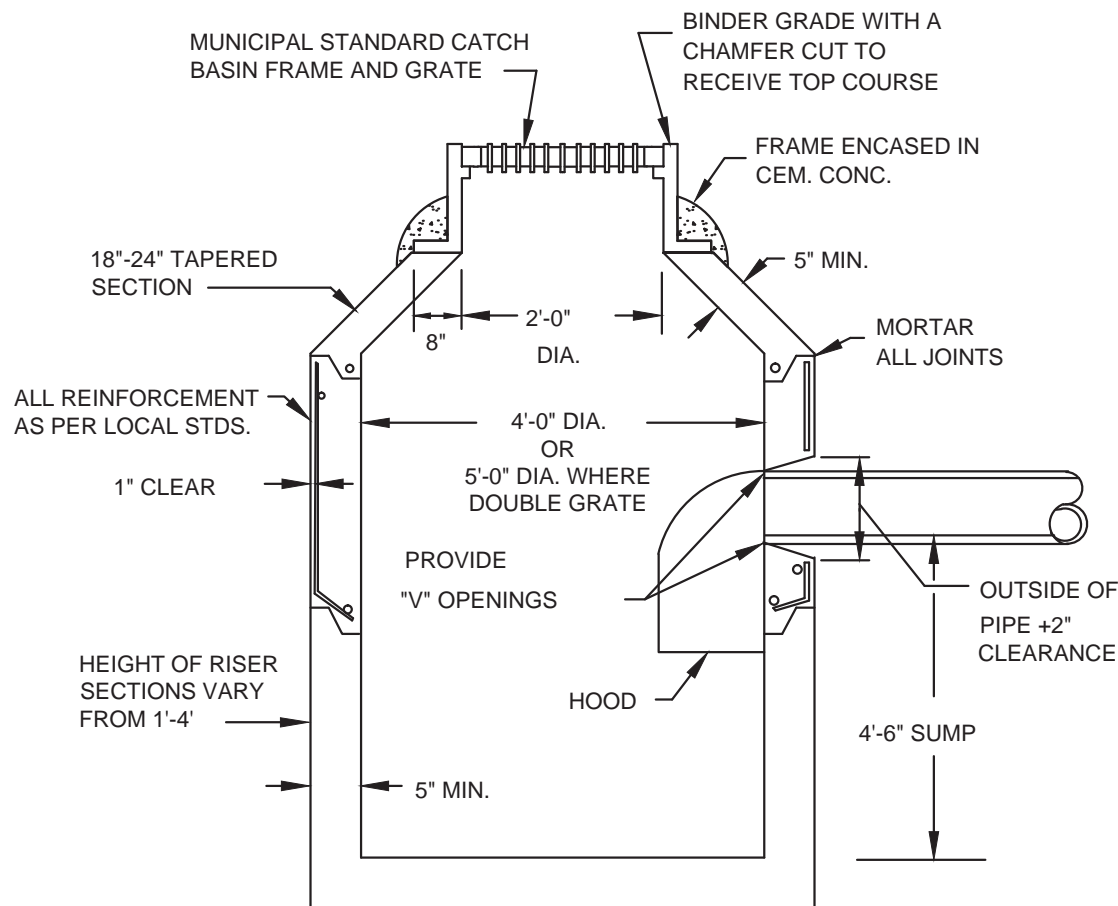
Drawing Title

**DETAILS I**

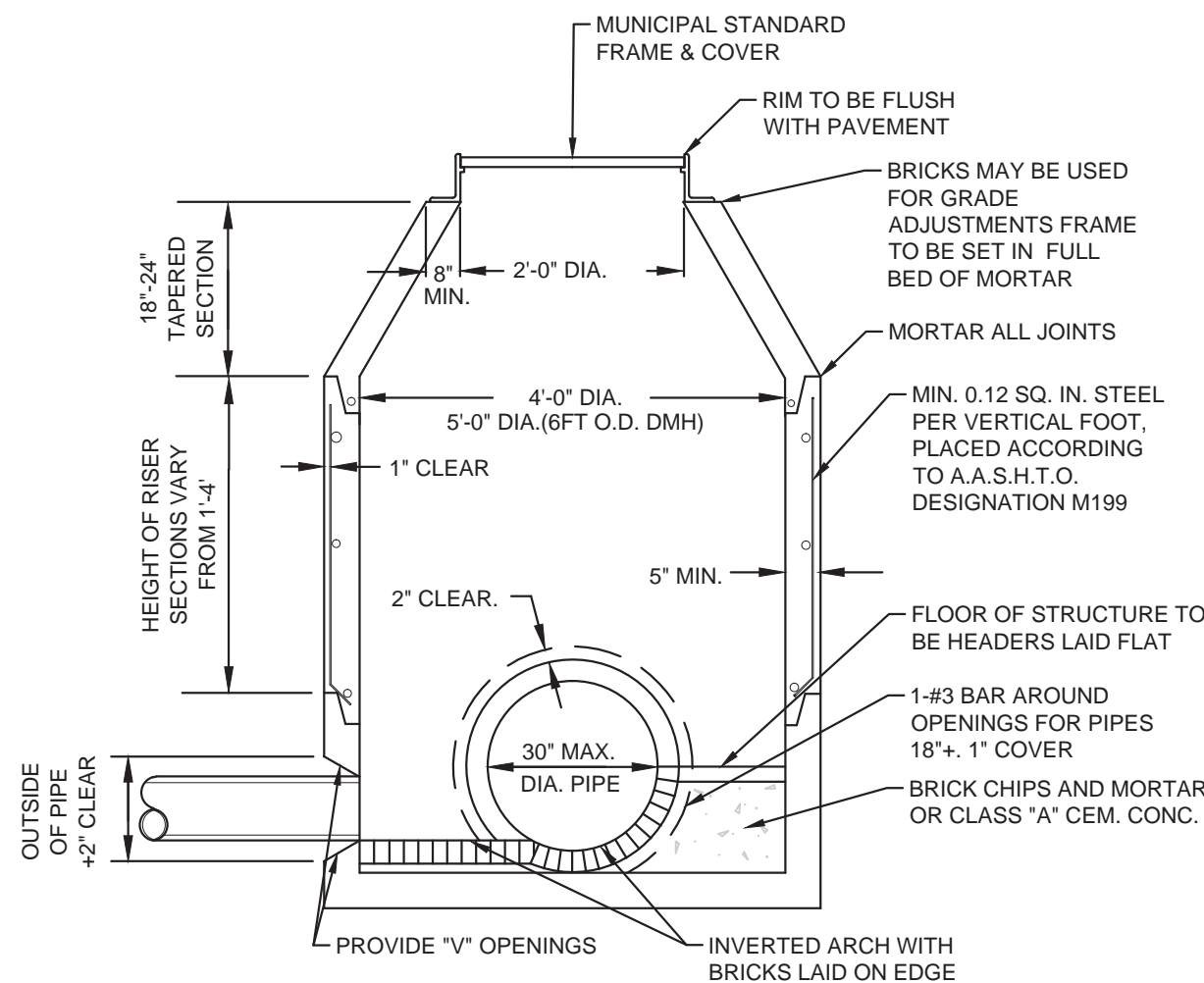
**C2.0**



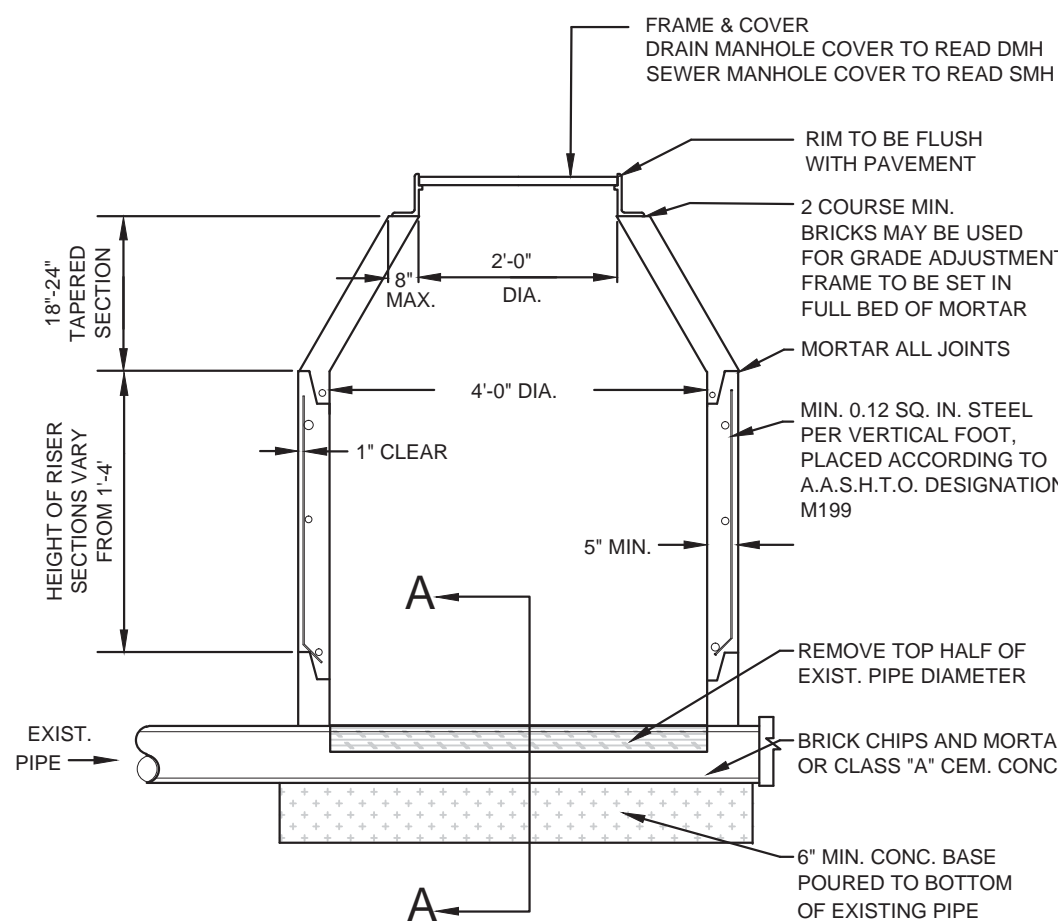
1 UTILITY TRENCH  
NOT TO SCALE



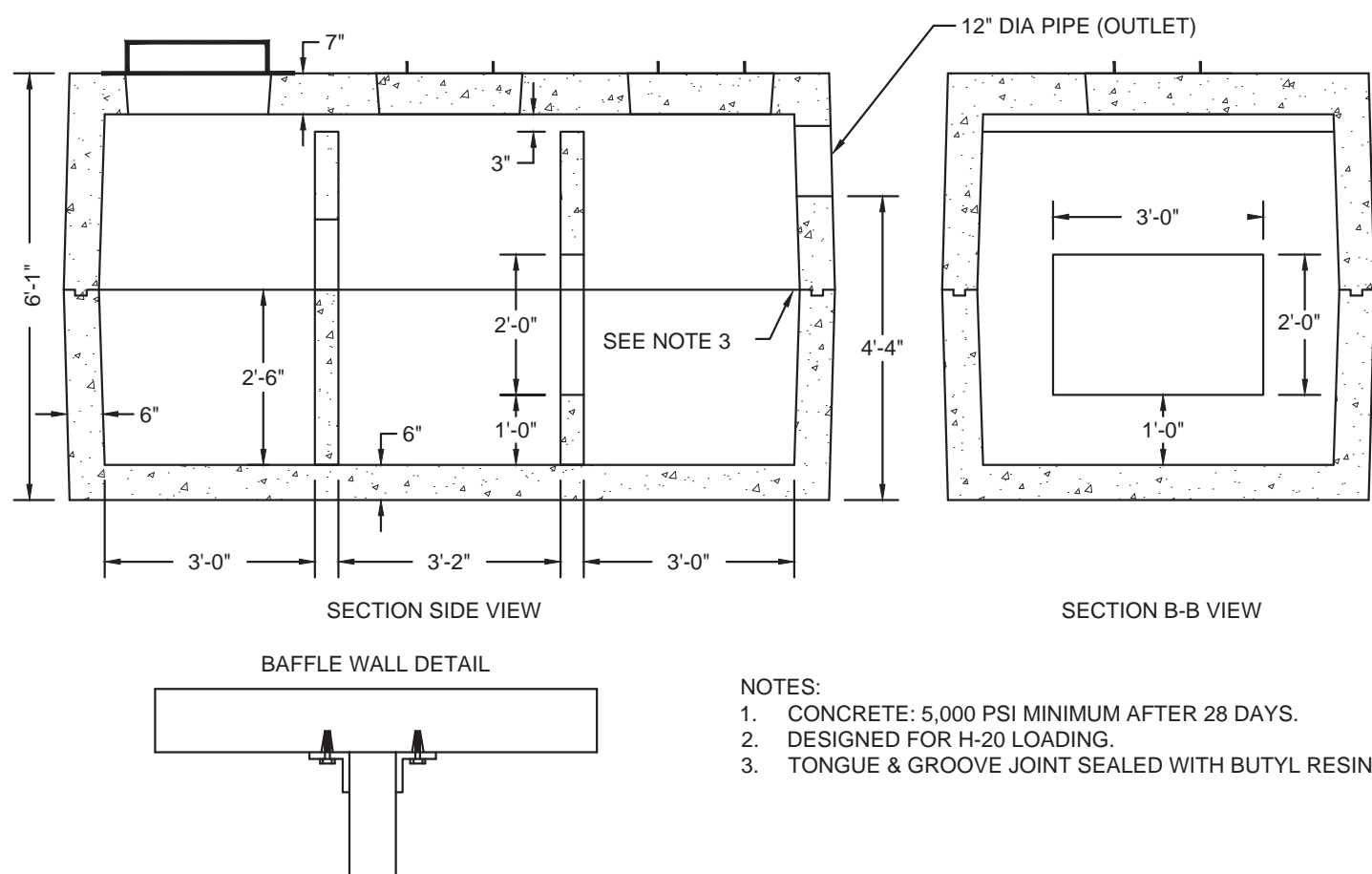
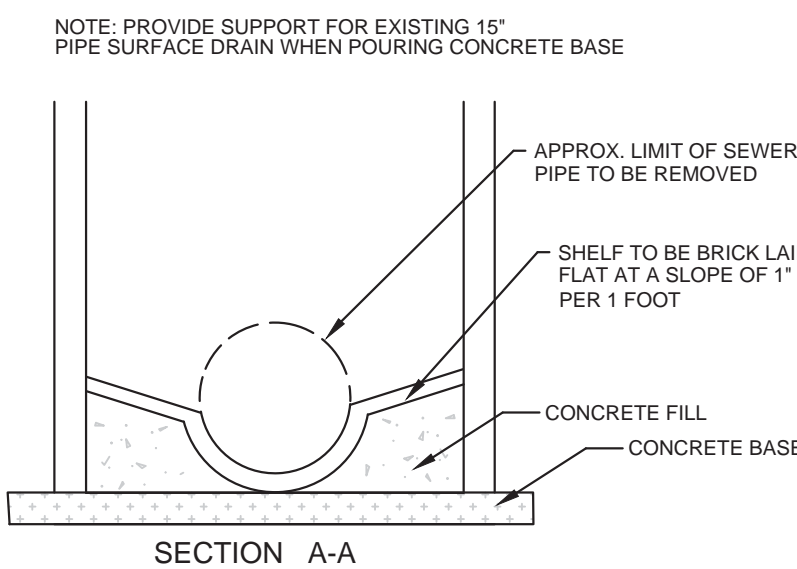
2 CB (CATCH BASIN)  
NOT TO SCALE



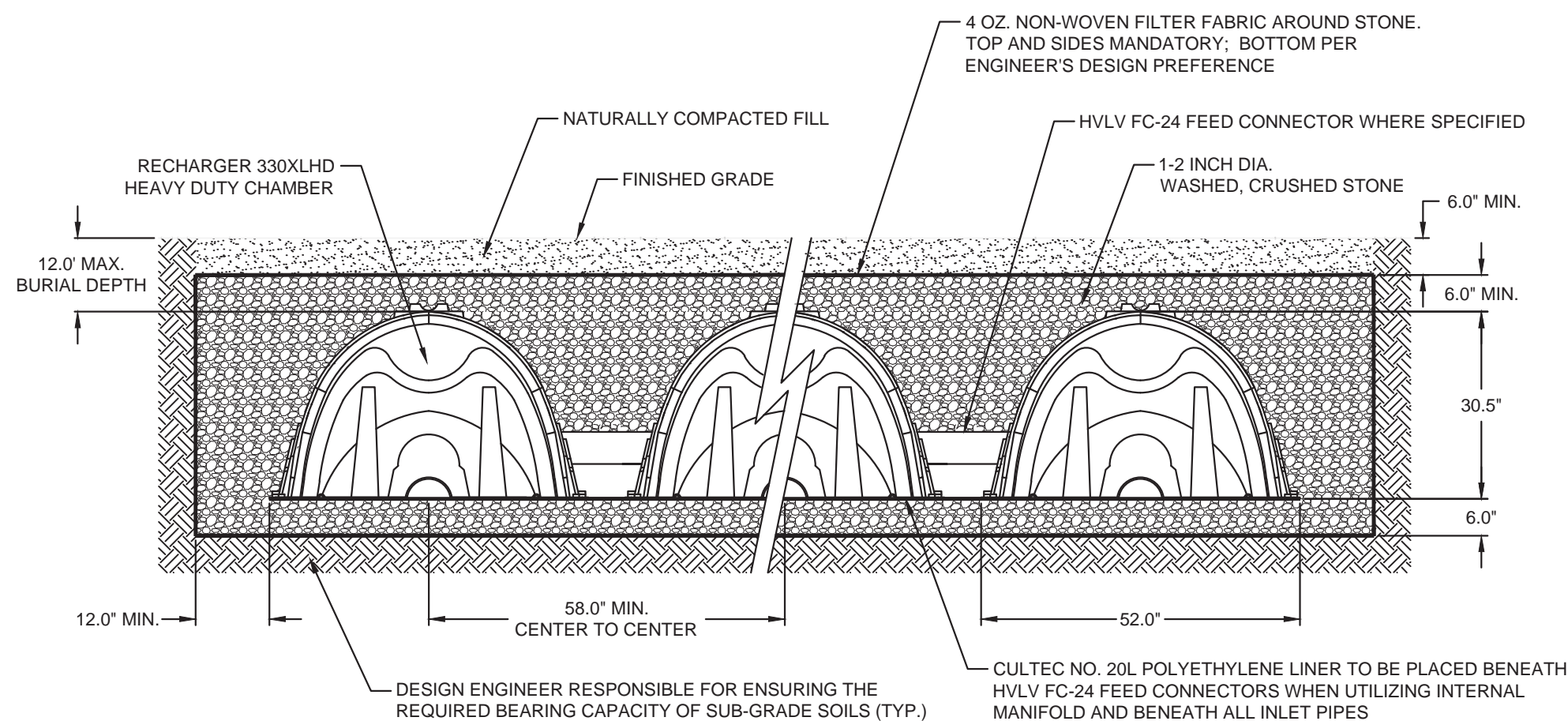
3 DMH (DRAIN MANHOLE)  
NOT TO SCALE



4 DMH OVER EXISTING PIPE  
NOT TO SCALE



5 PARTICLE SEPARATOR - 1,500 GALLON TANK  
NOT TO SCALE

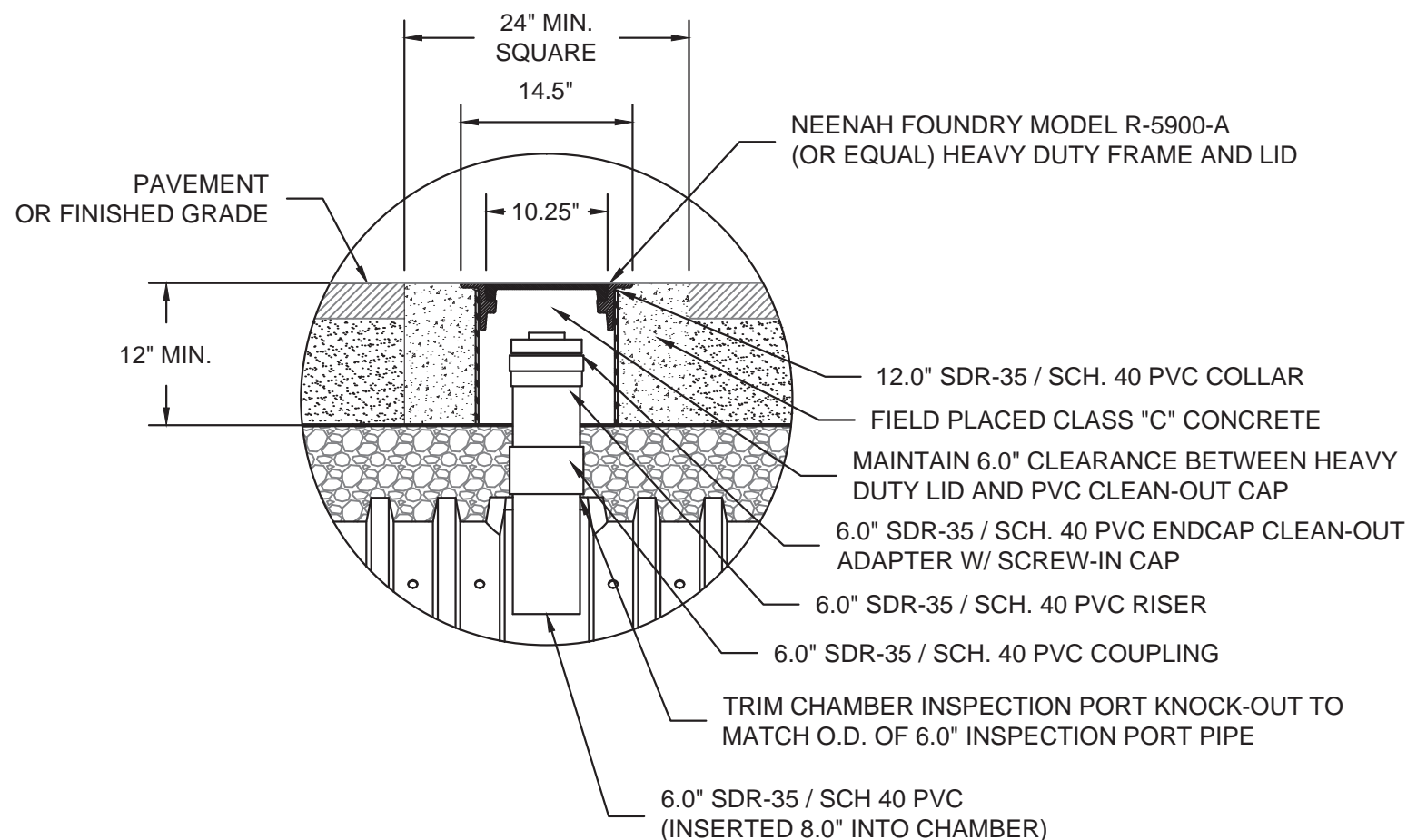


**GENERAL NOTES**

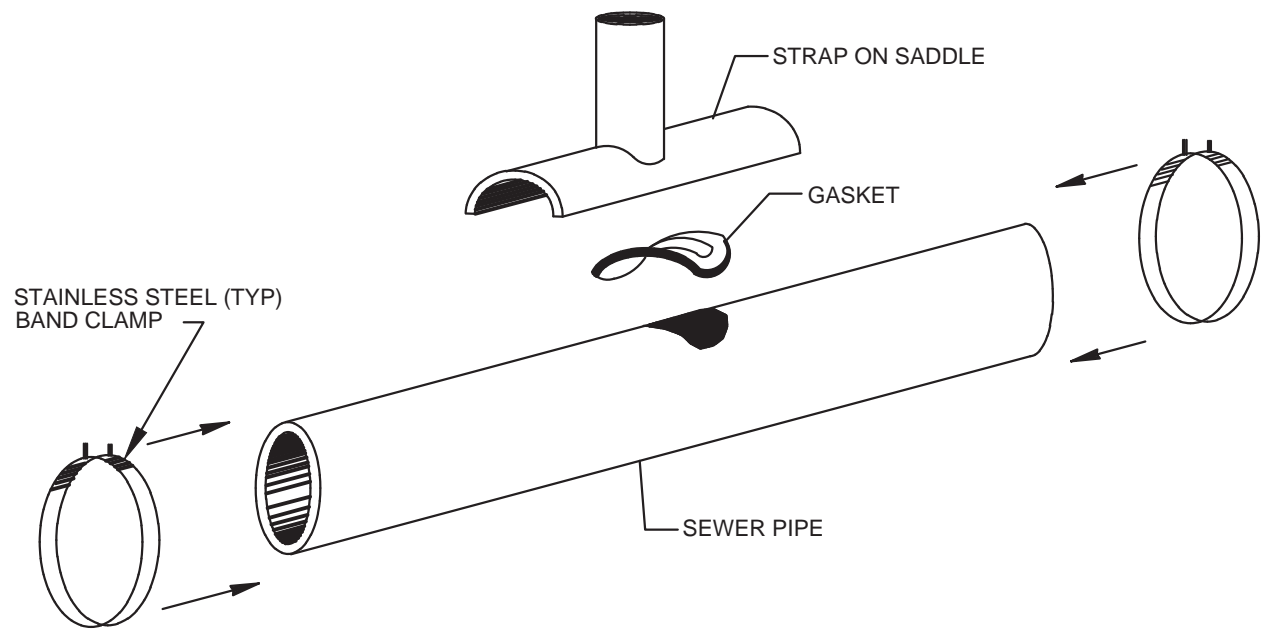
RECHARGER 330XL HD BY CULTEC, INC. OF BROOKFIELD, CT.  
STORAGE PROVIDED = 11.32 CF/FT PER DESIGN UNIT.  
REFER TO CULTEC, INC.'S CURRENT RECOMMENDED INSTALLATION  
GUIDELINES.  
THE CHAMBER WILL BE DESIGNED TO WITHSTAND TRAFFIC LOADS WHEN  
INSTALLED ACCORDING TO CULTEC'S RECOMMENDED INSTALLATION  
INSTRUCTIONS

ALL RECHARGER 330XL HD HEAVY DUTY UNITS ARE MARKED WITH A  
COLOR STRIPE FORMED INTO THE PART ALONG THE LENGTH OF THE  
CHAMBER.  
ALL RECHARGER 330XL HD CHAMBERS MUST BE INSTALLED IN  
ACCORDANCE WITH ALL APPLICABLE LOCAL, STATE AND FEDERAL  
REGULATIONS

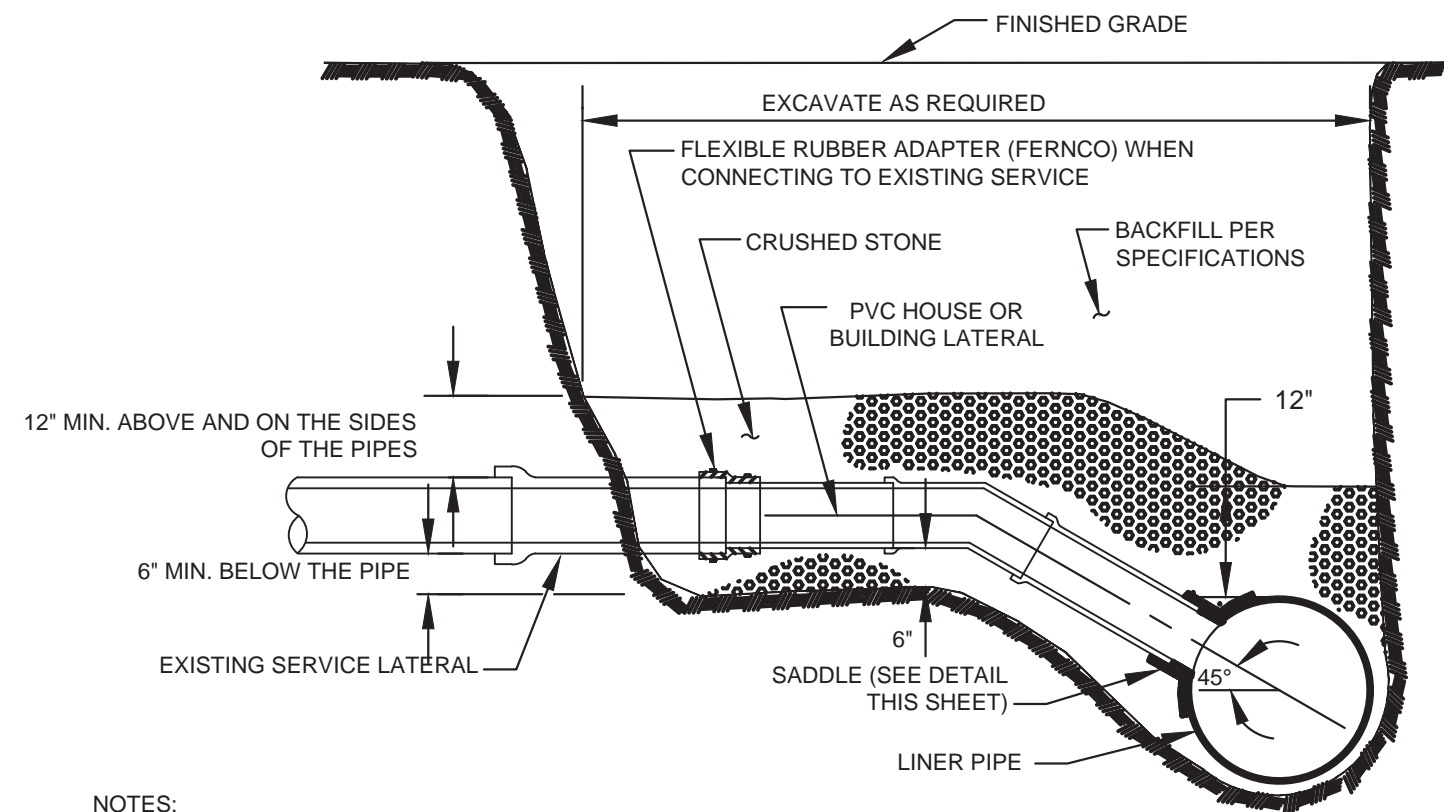
6 INFILTRATION TRENCH  
NOT TO SCALE



7 INSPECTION PORT  
NOT TO SCALE



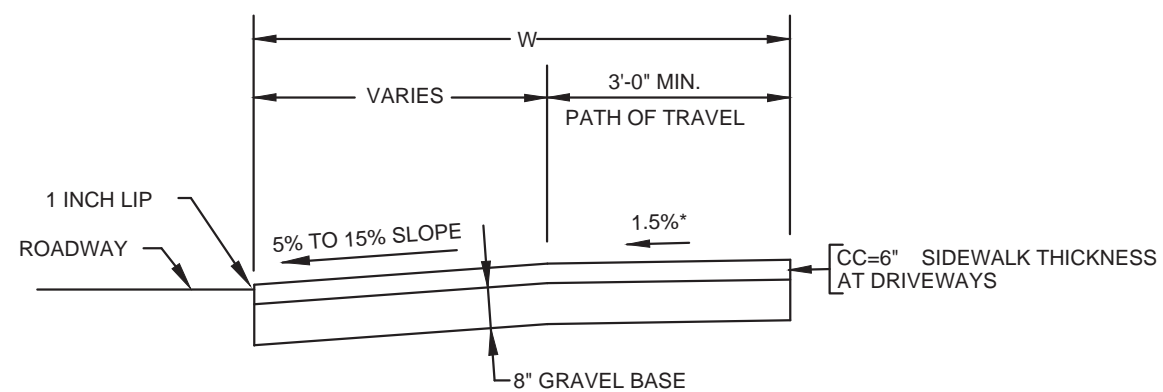
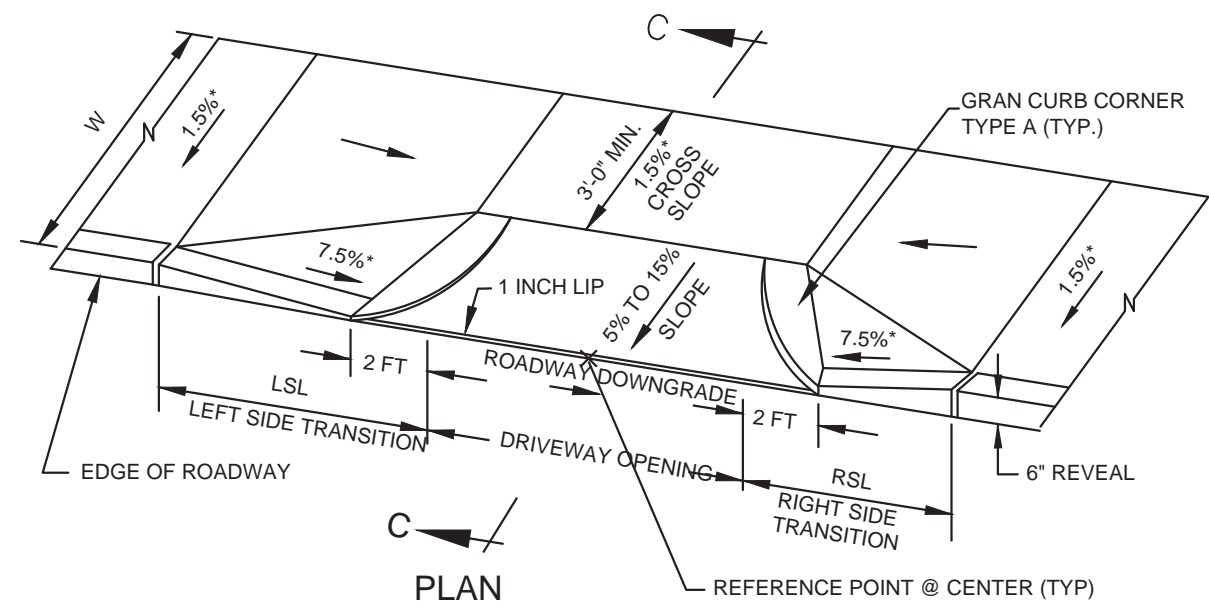
SADDLE CONNECTION - PLAN  
NOT TO SCALE



NOTES:  
1. REPLACE EXISTING SERVICE LINE TO EXTENT SHOWN ON PLAN/PROFILES AND AS SPECIFIED.

SADDLE CONNECTION - SECTION  
NOT TO SCALE

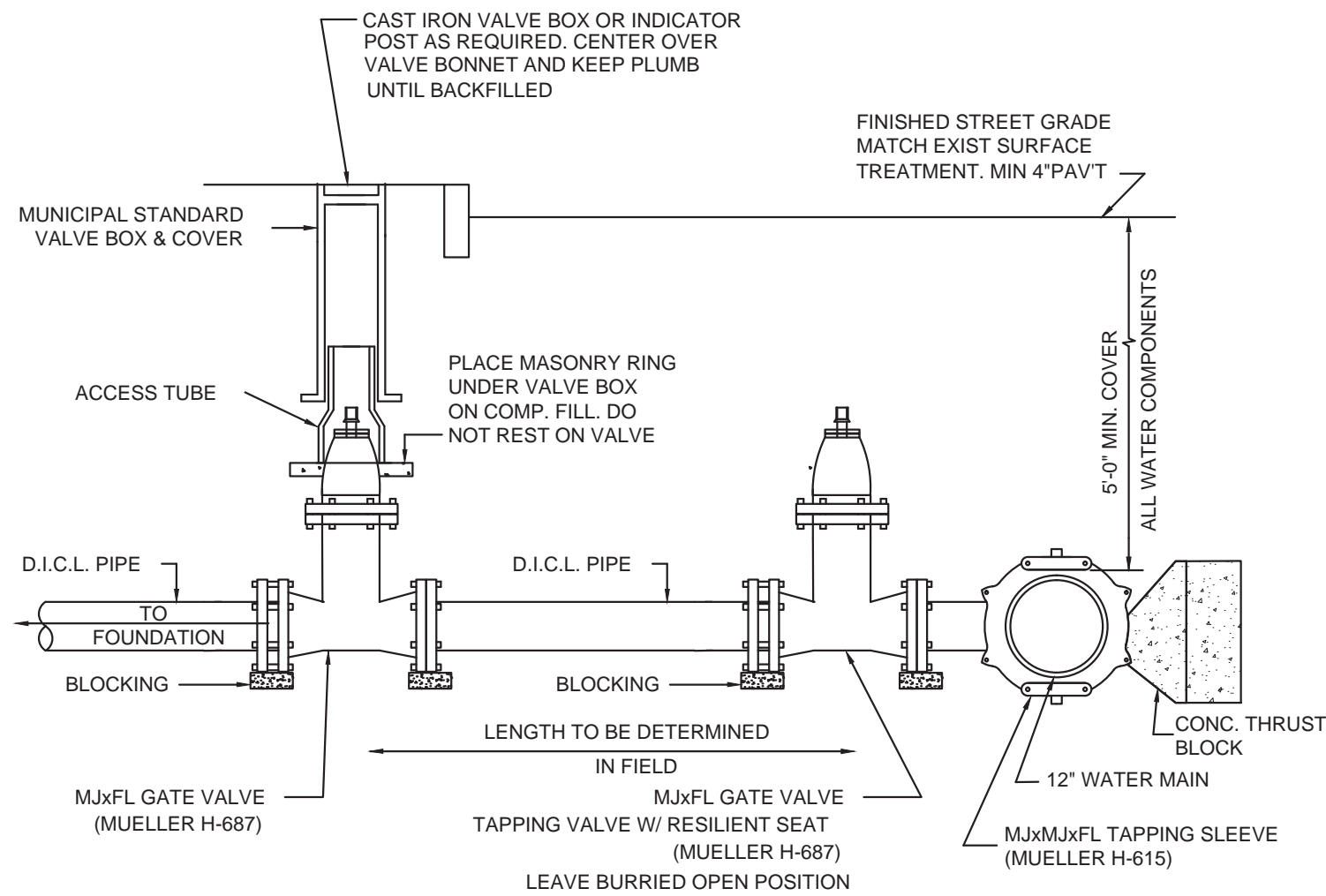
1 SANITARY SEWER SERVICE  
NOT TO SCALE



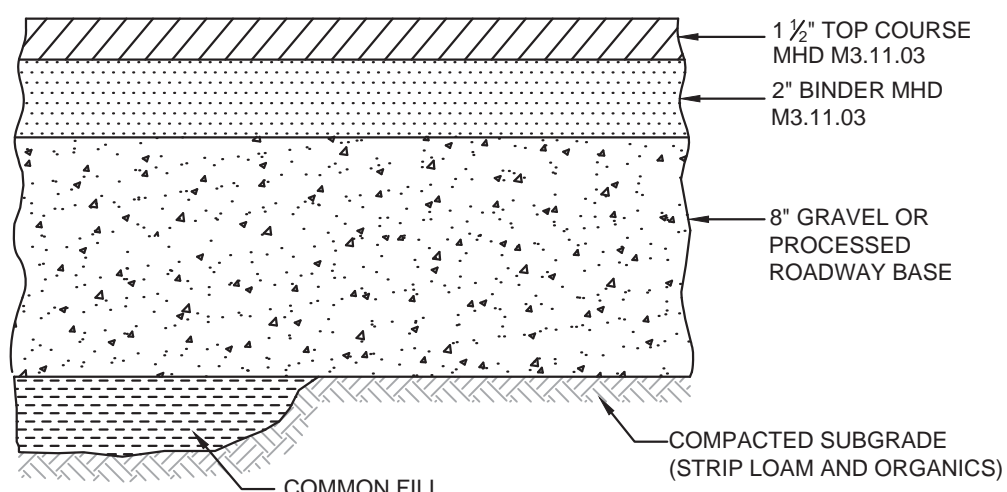
LEGEND:

LSL = LEFT SIDE FRONT TRANSITION LENGTH  
RSL = RIGHT SIDE FRONT TRANSITION LENGTH  
W = SIDEWALK WIDTH  
\* = TOLERANCE FOR CONSTRUCTION ±0.5%

5 DRIVEWAY APRON  
NOT TO SCALE



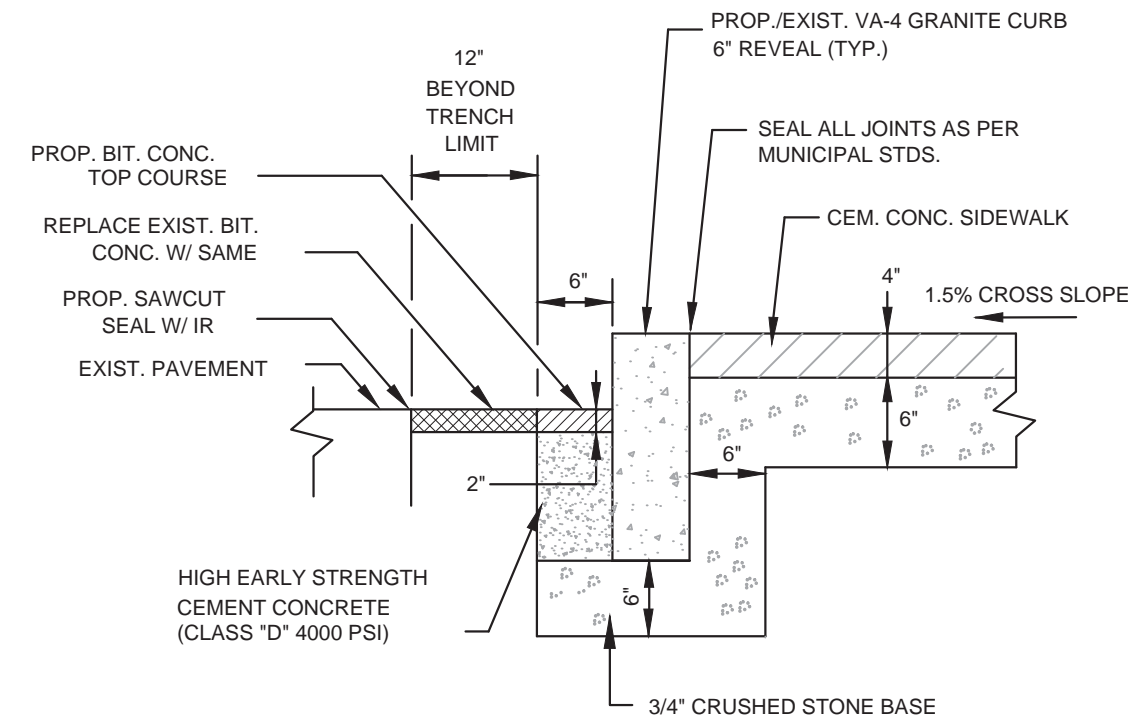
2 WATER SERVICE CONNECTION  
NOT TO SCALE



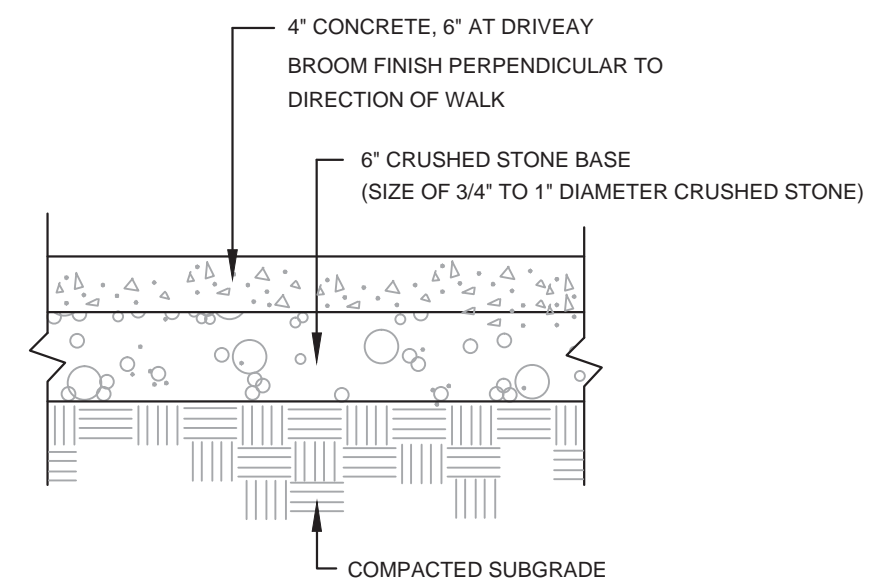
NOTE:

1. SEE SITE LAYOUT PLAN FOR PAVEMENT WIDTH AND LOCATION.
2. SEE GRADING PLAN FOR PAVEMENT SLOPE AND CROSS-SLOPE.

6 BITUMINOUS CONCRETE PAVEMENT  
NOT TO SCALE



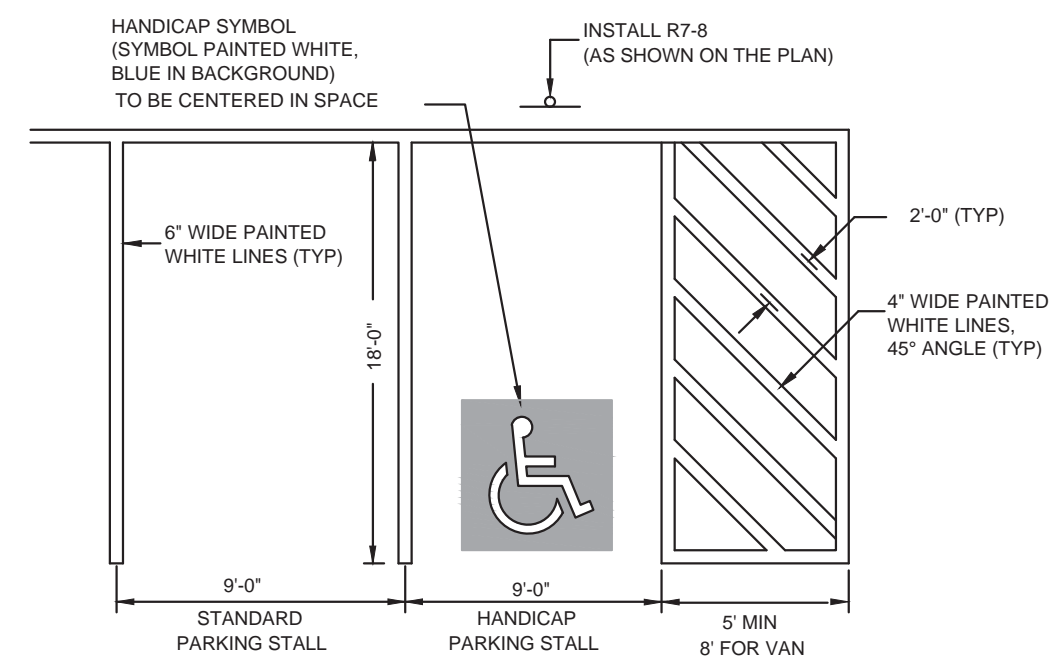
3 VERTICAL GRANITE CURB (NEW OR RESET)  
NOT TO SCALE



NOTES:

1. PROVIDE 1/2\"/>
2. PROVIDE A TOOLED DUMMY JOINT 1/2\"/>

4 CEMENT CONCRETE PAVEMENT  
NOT TO SCALE



NOTE:

1. ALL PAINT SHALL BE FAST DRYING WHITE TRAFFIC PAINT, MEET THE REQUIREMENTS OF AASHTO M248-TYPE N. PAINT SHALL BE APPLIED AS SPECIFIED BY MANUFACTURER.
2. SYMBOLS & PARKING STALLS SHALL CONFORM TO THE REQUIREMENTS OF THE AMERICAN WITH DISABILITIES ACT.

7 PARKING STALL STRIPING  
NOT TO SCALE



The Noannet Group  
**515 Somerville Ave**

**CambridgeSeven**

Architects and Planners

1050 Massachusetts Avenue  
Cambridge, MA 02138  
617 492-7000 Fax 492-7007

Consultant Name and Logo

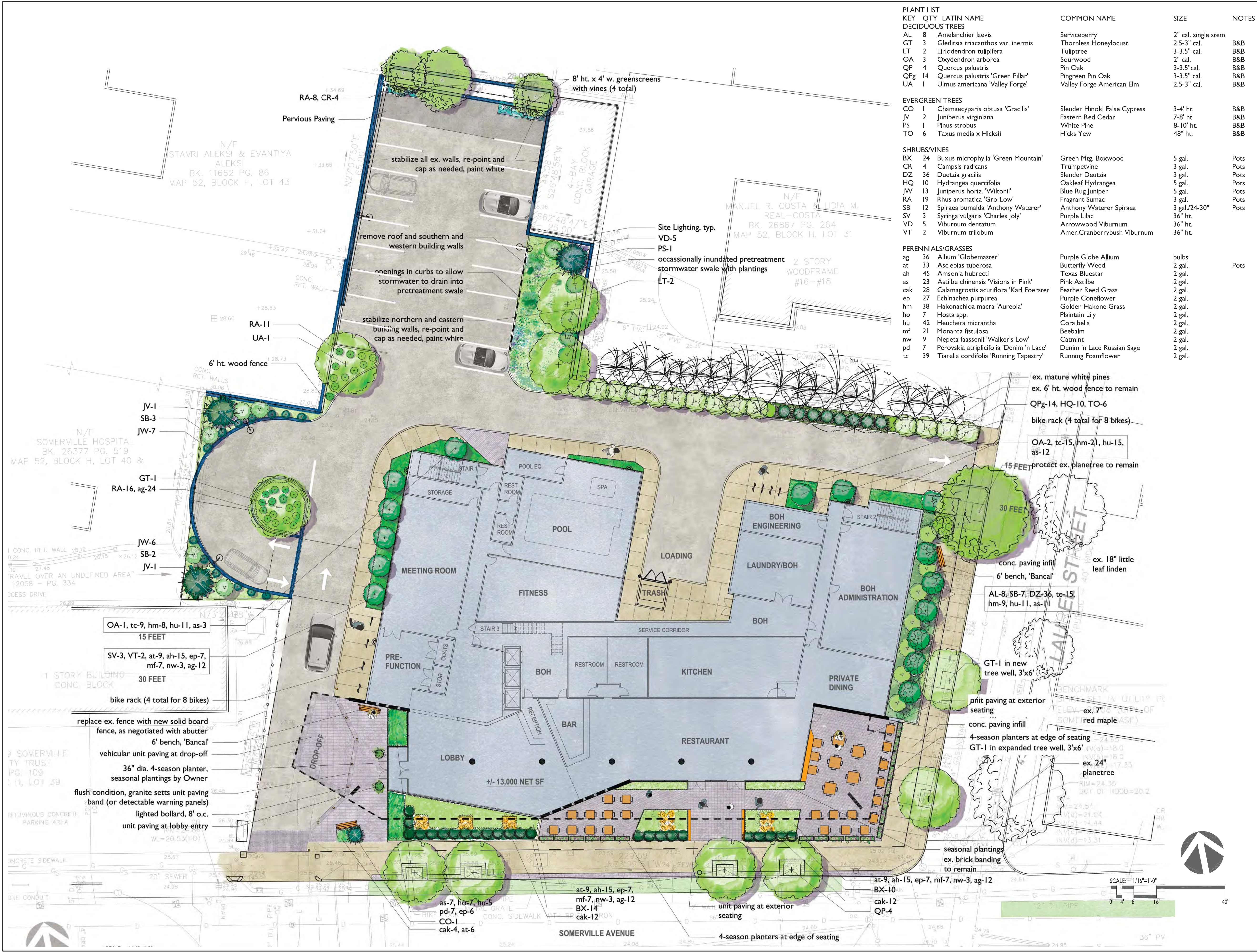


1	NO REVISION THIS SHEET	10/04/2018
Number	Revision	Date

Job #	2018-093		
Project	515 Somerville Ave		
Drawn By	ES/DM	Checked	ES
Date	08/28/2018		
Scale	NTS		

Drawing Title  
**DETAILS II**

**C2.1**



# The Noannet Group

## 515 Somerville Ave

### CambridgeSeven

Architects and Planners

1050 Massachusetts Avenue  
Cambridge, MA 02138  
617 492-7000 Fax 492-7007

VERDANT LANDSCAPE ARCHITECTURE  
318 Harvard Street, Suite 25  
Brookline, MA 02446  
617-735-1180  
verdantlandscapearchitecture.com



Number	Revision	Date

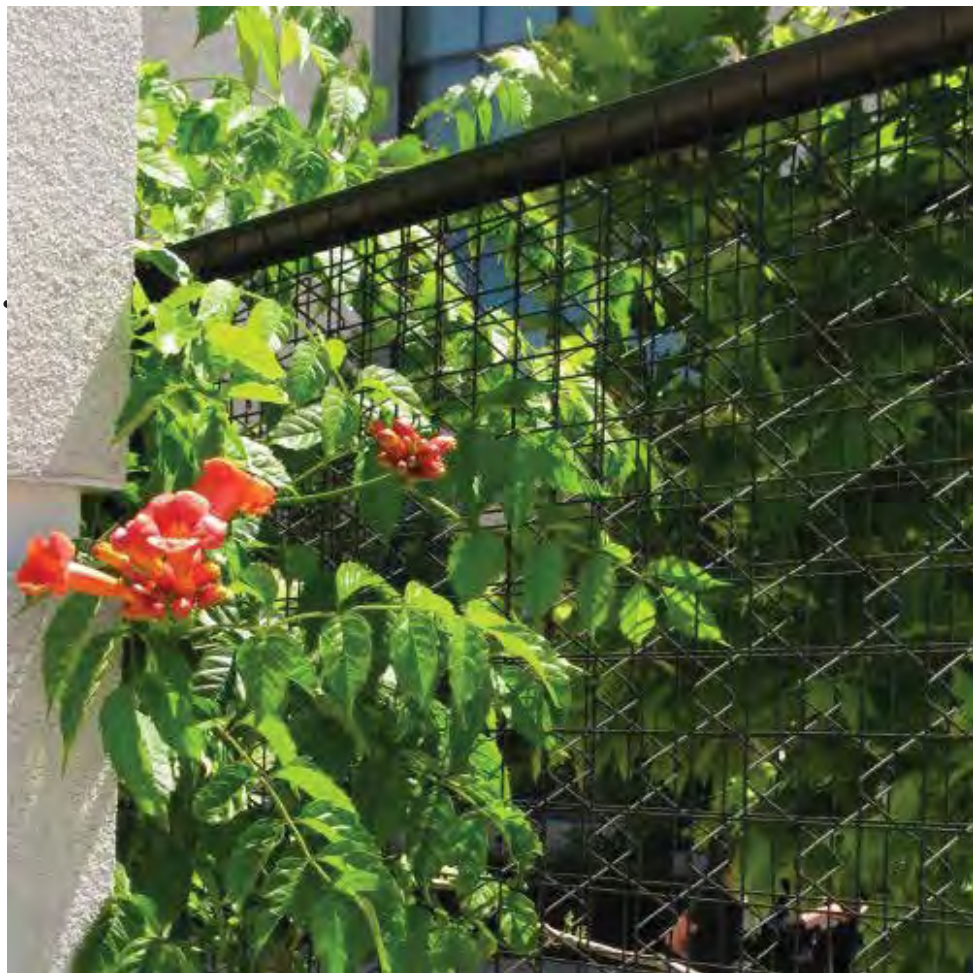
Job # 18064  
Project 515 Somerville Ave  
Drawn By KP Checked Checker  
Date October 4, 2018

Scale

Drawing Title

Landscape Plan

# L1.0



GREEN SCREENS WITH VINES



STORMWATER DRAIN TO PRETREATMENT SWALE



3' DIA. PLANTER



6' BENCH, 'BANCAL'



LIGHTED BOLLARD



GRANITE SETTS  
UNIT PAVING BAND



VEHICULAR PAVERS  
AT DROP-OFF



The Noannet Group  
**515 Somerville  
Ave**

**CambridgeSeven**

Architects and Planners

1050 Massachusetts Avenue  
Cambridge, MA 02138  
617-492-7000 Fax 492-7007

VERDANT LANDSCAPE ARCHITECTURE  
318 Harvard Street, Suite 25  
Brookline, MA 02446  
617-735-1180  
verdantlandscapearchitecture.com

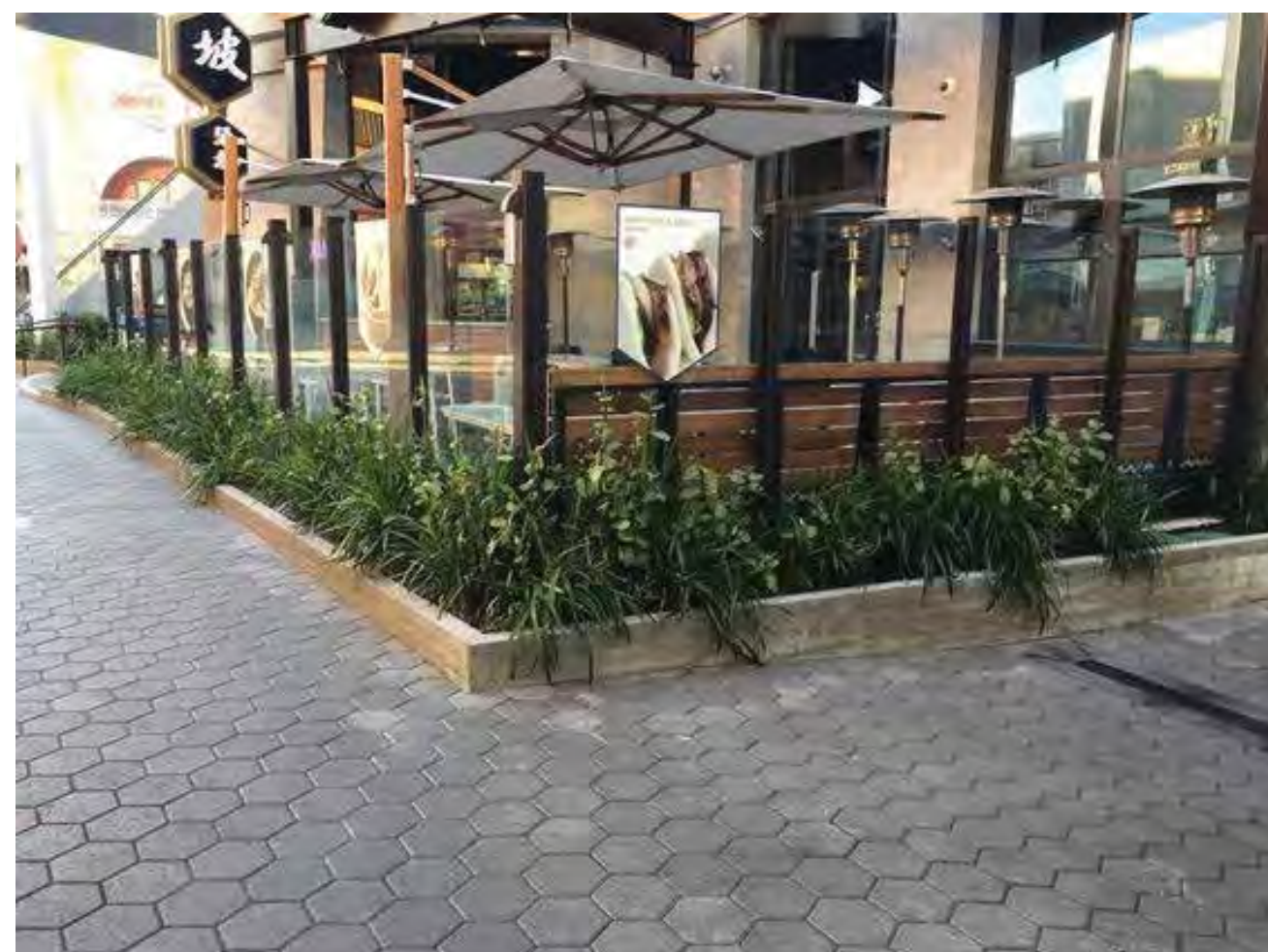
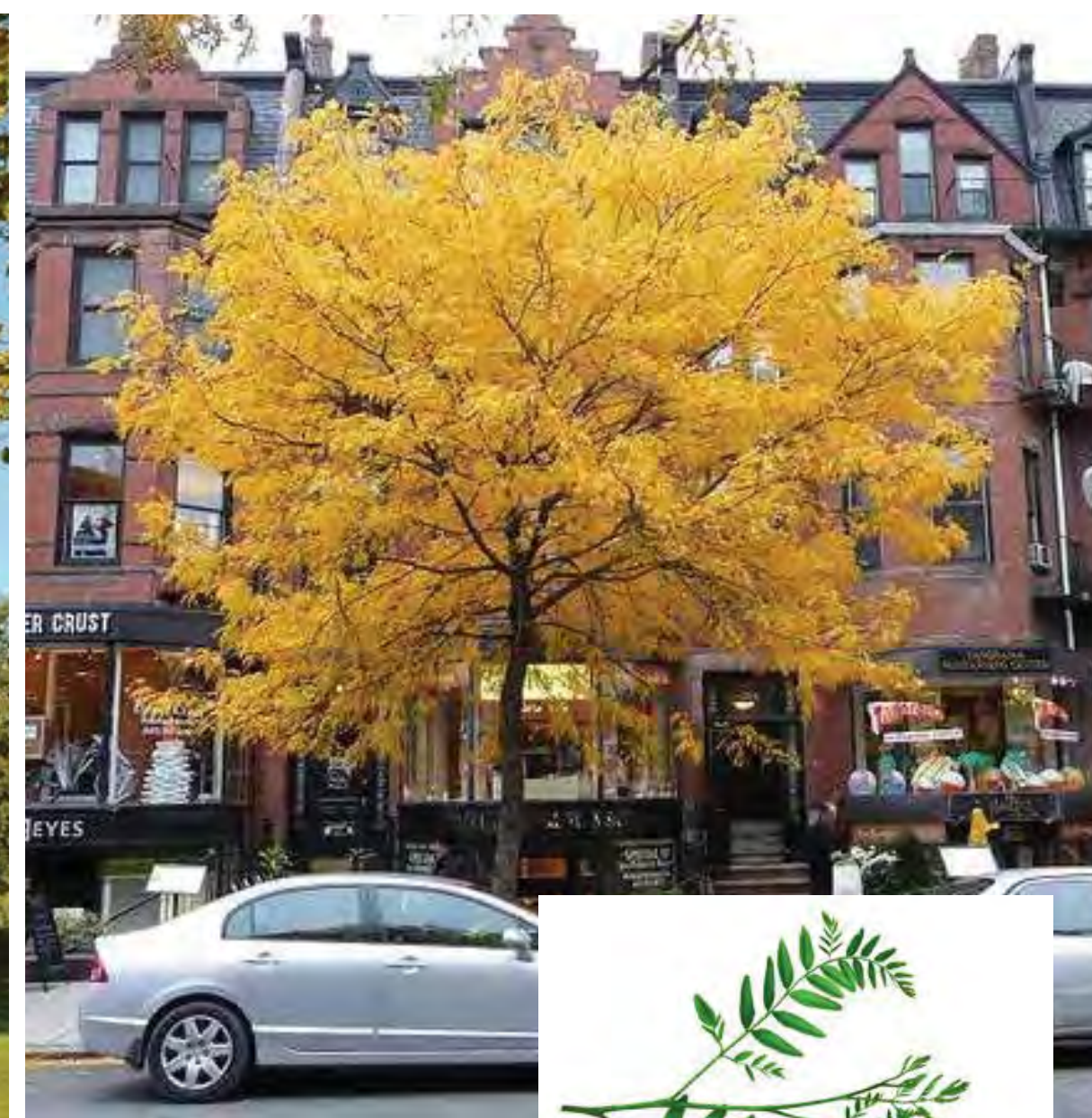


Number	Revision	Date

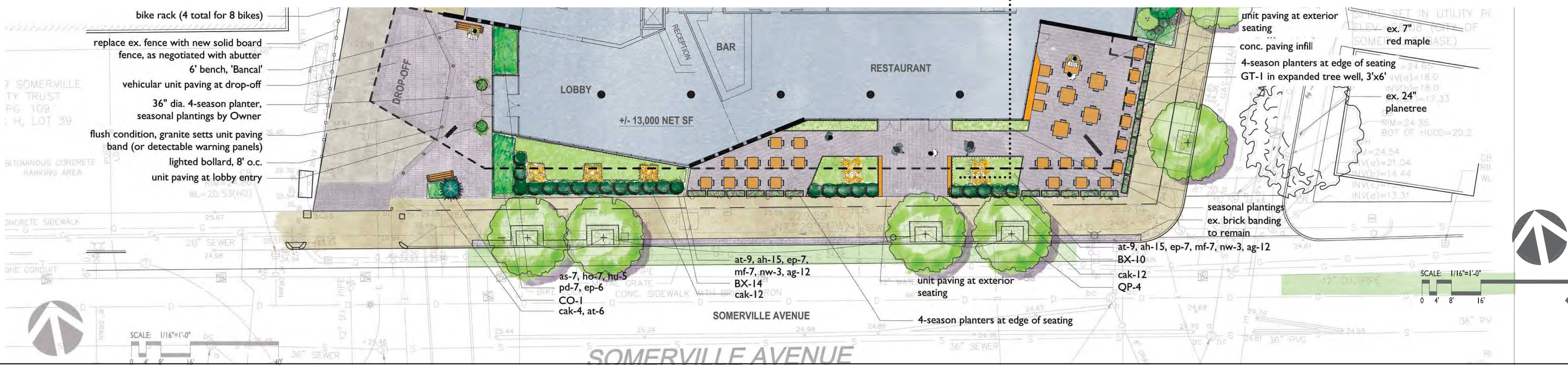
Job #	18064		
Project	515 Somerville Ave		
Drawn By	KP	Checked	Checker
Date	October 4, 2018		
Scale			

Drawing Title  
**Landscape  
Plan**

**L2.0**



## EXTERIOR SEATING



The Noannet Group  
**515 Somerville  
Ave**

**CambridgeSeven**

Architects and Planners  
1050 Massachusetts Avenue  
Cambridge, MA 02138  
617 492-7000 Fax 492-7007

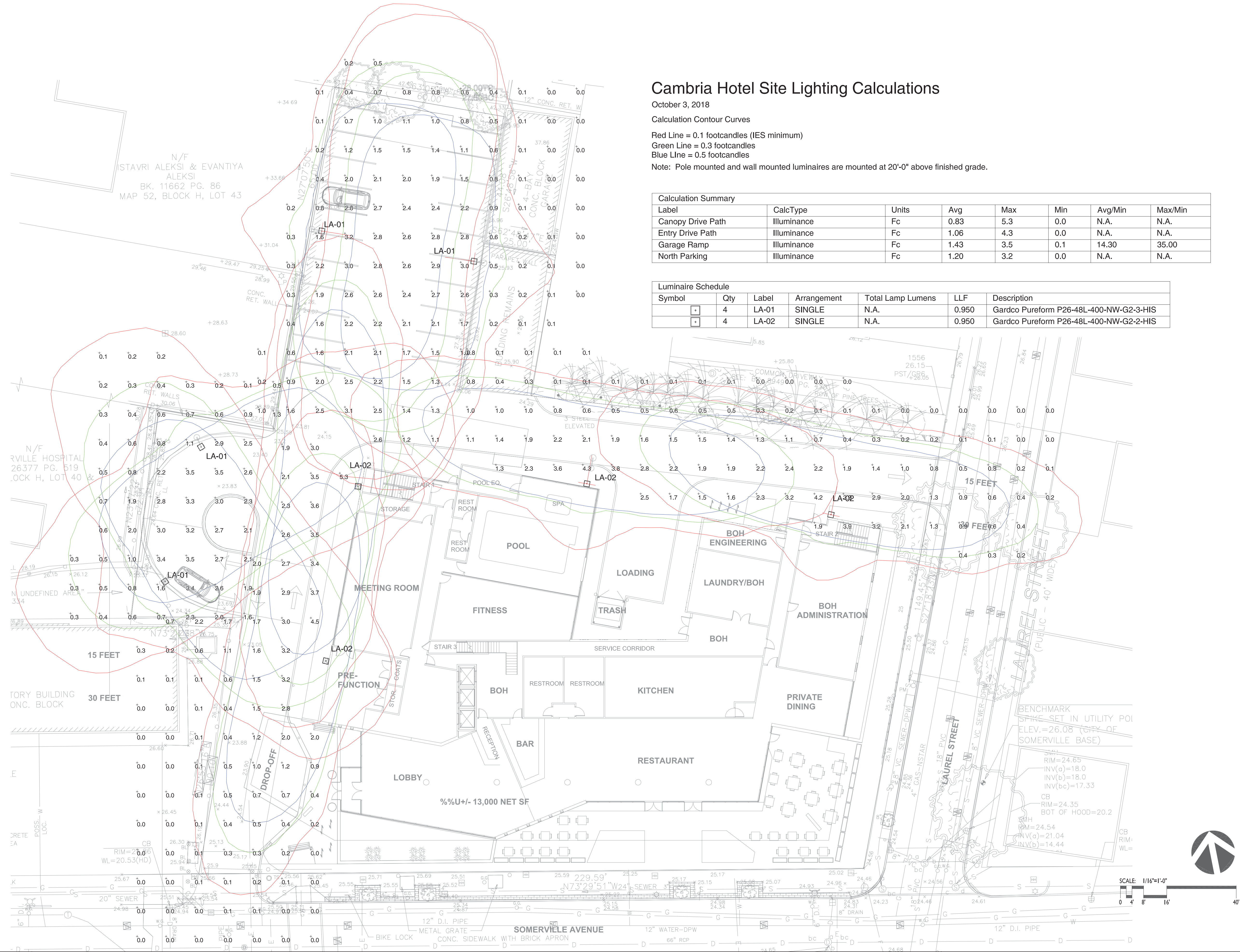
**VERDANT LANDSCAPE ARCHITECTURE**  
318 Harvard Street, Suite 25  
Brookline, MA 02446  
617-735-1180  
verdantlandscapearchitecture.com



Number	Revision	Date

Job #	18064		
Project	515 Somerville Ave		
Drawn By	KP	Checked	Checker
Date	October 4, 2018		
Scale			
Drawing Title	Landscape Plan		

## L3.0



Cambria Hotel Site Lighting Calculations

October 3, 2018

Calculation Contour Curves

Red Line = 0.1 footcandles (IES minimum)  
Green Line = 0.3 footcandles  
Blue Line = 0.5 footcandles

Note: Pole mounted and wall mounted luminaires are mounted at 20'-0" above finished grade.

Calculation Summary							
Label	CalcType	Units	Avg	Max	Min	Avg/Min	Max/Min
Canopy Drive Path	Illuminance	Fc	0.83	5.3	0.0	N.A.	N.A.
Entry Drive Path	Illuminance	Fc	1.06	4.3	0.0	N.A.	N.A.
Garage Ramp	Illuminance	Fc	1.43	3.5	0.1	14.30	35.00
North Parking	Illuminance	Fc	1.20	3.2	0.0	N.A.	N.A.

Luminaire Schedule						
Symbol	Qty	Label	Arrangement	Total Lamp Lumens	LLF	Description
⬢	4	LA-01	SINGLE	N.A.	0.950	Gardco Pureform P26-48L-400-NW-G2-3-HIS
⬢	4	LA-02	SINGLE	N.A.	0.950	Gardco Pureform P26-48L-400-NW-G2-2-HIS

8/7/2018 2:10:23 PM



The Noannet Group  
**515 Somerville Ave**

**CambridgeSeven**

Architects and Planners

1050 Massachusetts Avenue  
Cambridge, MA 02138  
617 492-7000 Fax 492-7007



Number	Revision	Date

Job #	18064		
Project	515 Somerville Ave		
Drawn By	KP	Checked	Checker
Date	October 4, 2018		
Scale			

Drawing Title  
**Landscape Lighting Plan**

**L4.0**



The Noannet Group  
**515 Somerville Ave**

**CambridgeSeven**

Architects and Planners

1050 Massachusetts Avenue  
Cambridge, MA 02138  
617 492-7000 Fax 492-7007



*[Signature]*

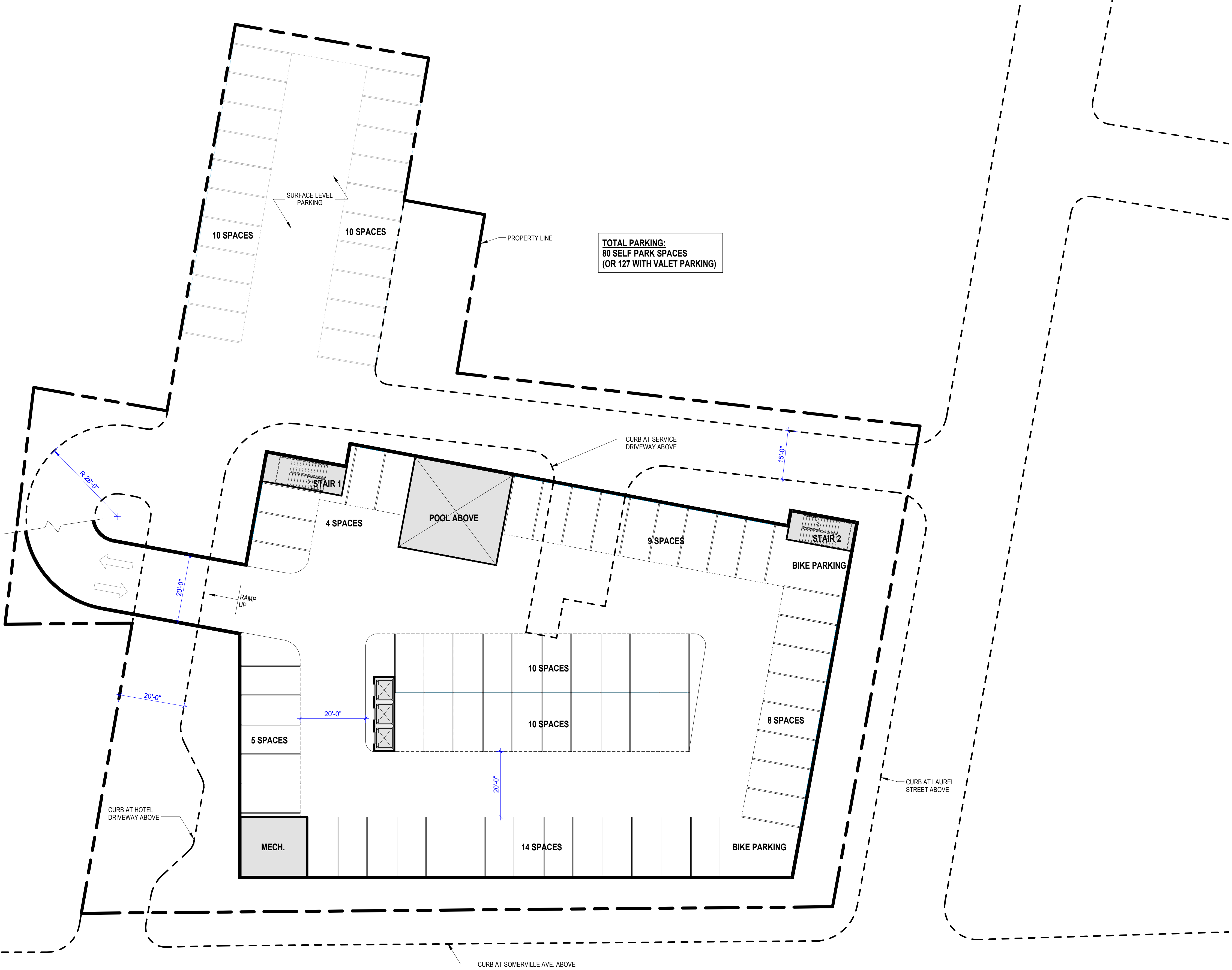
Consultant Name and Logo

Number	Revision	Date

Job #	0000		
Project	515 Somerville Ave		
Drawn By	JB	Checked	GJ
Date	OCTOBER 4, 2018		
Scale	1/16" = 1'-0"		

Drawing Title  
**PARKING**

**A1.0**





The Noannet Group  
**515 Somerville  
Ave**

**CambridgeSeven**

Architects and Planners

1050 Massachusetts Avenue  
Cambridge, MA 02138  
617 492-7000 Fax 492-7007



Consultant Name and Logo

Job # 0000  
Project 515 Somerville Ave  
Drawn By JB Checked GJ  
Date OCTOBER 4, 2018  
Scale 1/16" = 1'-0"

Drawing Title  
**FIRST FLOOR PLAN**

**A1.1**



The Noannet Group  
**515 Somerville Ave**

**CambridgeSeven**

Architects and Planners

1050 Massachusetts Avenue  
Cambridge, MA 02138  
617 492-7000 Fax 492-7007



Consultant Name and Logo

Number	Revision	Date

Job #	0000		
Project	515 Somerville Ave		
Drawn By	JB	Checked	GJ
Date	OCTOBER 4, 2018		
Scale	1/16" = 1'-0"		

Drawing Title  
**SECOND FLOOR PLAN**

**A1.2**





The Noannet Group  
**515 Somerville Ave**

**CambridgeSeven**

Architects and Planners

1050 Massachusetts Avenue  
Cambridge, MA 02138  
617 492-7000 Fax 492-7007



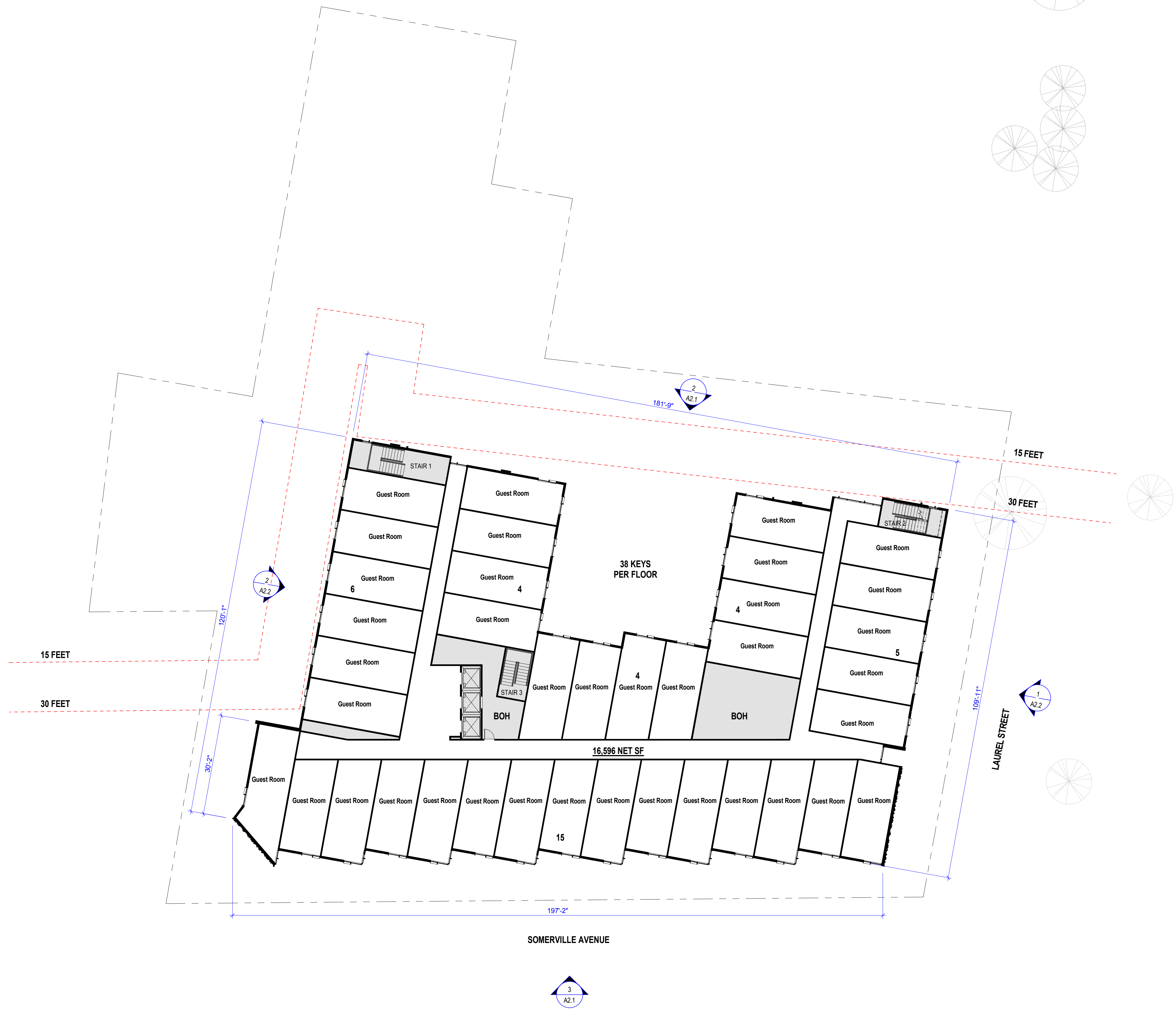
Consultant Name and Logo

Number	Revision	Date

Job #	0000		
Project	515 Somerville Ave		
Drawn By	JB	Checked	GJ
Date	OCTOBER 4, 2018		
Scale	1/16" = 1'-0"		

Drawing Title  
**THIRD FLOOR PLAN**

**A1.3**





The Noannet Group  
**515 Somerville Ave**

**CambridgeSeven**

Architects and Planners

1050 Massachusetts Avenue  
Cambridge, MA 02138  
617 492-7000 Fax 492-7007



Consultant Name and Logo

Number	Revision	Date

Job #	0000		
Project	515 Somerville Ave		
Drawn By	JB	Checked	GJ
Date	OCTOBER 4, 2018		
Scale	1/16" = 1'-0"		

Drawing Title  
**FOURTH FLOOR PLAN**

**A1.4**





The Noannet Group  
**515 Somerville Ave**

**CambridgeSeven**

Architects and Planners

1050 Massachusetts Avenue  
Cambridge, MA 02138  
617 492-7000 Fax 492-7007



*[Signature]*

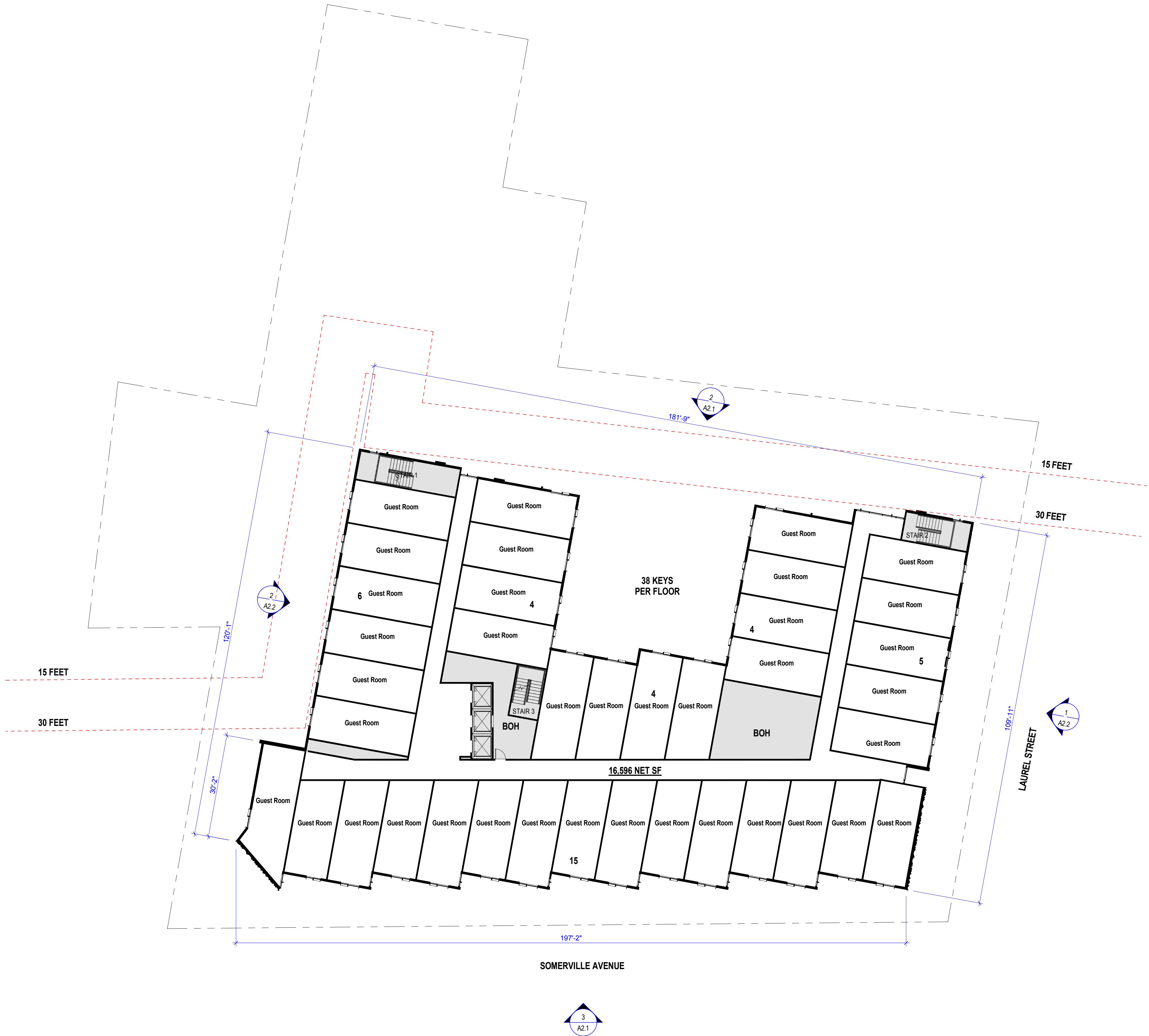
Consultant Name and Logo

Number	Revision	Date

Job #	0000		
Project	515 Somerville Ave		
Drawn By	JB	Checked	GJ
Date	OCTOBER 4, 2018		
Scale	1/16" = 1'-0"		

Drawing Title  
**FIFTH FLOOR PLAN**

**A1.5**





The Noannet Group  
**515 Somerville Ave**

**CambridgeSeven**

Architects and Planners

1050 Massachusetts Avenue  
Cambridge, MA 02138  
617 492-7000 Fax 492-7007



*[Signature]*

Consultant Name and Logo

Number	Revision	Date

Job #	0000		
Project	515 Somerville Ave		
Drawn By	JB	Checked	GJ
Date	OCTOBER 4, 2018		
Scale	1/16" = 1'-0"		

Drawing Title  
**SIXTH FLOOR PLAN**

**A1.6**

